



Bi-fold doors
available in:
aluminium, hardwood
timber, aluminium/timber,
PVCu, glass/aluminium,
glass/timber &
glass/glass

Bi-Folding Door Range

Welcome to Easyfit Window Warehouse Bi-Folding Door range



Ask yourself... **why compromise on security, weather resistance, performance or choice?**

All our doors have a **dual running fully encapsulated track system**, so that it cannot be lifted off its track. A track system with **unobstructed level access** and **uncompromised weather and security** as standard.

Unique design **steel rollers engineered for ease of operation, strength and durability**. **Aesthetically pleasing**, unique design flat handles ensure flat folding with **uncompromising operation**.

Choose from our **extensive range** of folding sliding doors, each combine our **innovative design** and **state of art folding sliding door technology**.

Expect more with wider **openings** and **limitless door configurations**. Your choices are far from compromised

Things we consider **important**

Choice Custom made to suit your design, available in Aluminium, Timber, Timber Clad Aluminium, uPVC and Glass

Function Inward, outward, right and left, opening to suit you

Security 5 point locking system. Conscious design features incorporated into each system

Durable Using the 'Fold N Slide'  hardware range which keeps the door running smooth

Weatherproof CE Compliant BS EN 14351-1:2006

Efficient U values from as low as 1.09 to keep you warm in the cold & cool in the heat

Aesthetics Perfectly balanced profiles, giving maximum strength with minimum frame

Quality All our door systems are manufactured in the UK





NUMEROUS APPLICATIONS

There are so many situations in which a folding sliding door can be a solution to improving your living space and the environment around you. Break down those barriers by creating a wider opening with a folding sliding door and bring the outside, inside.



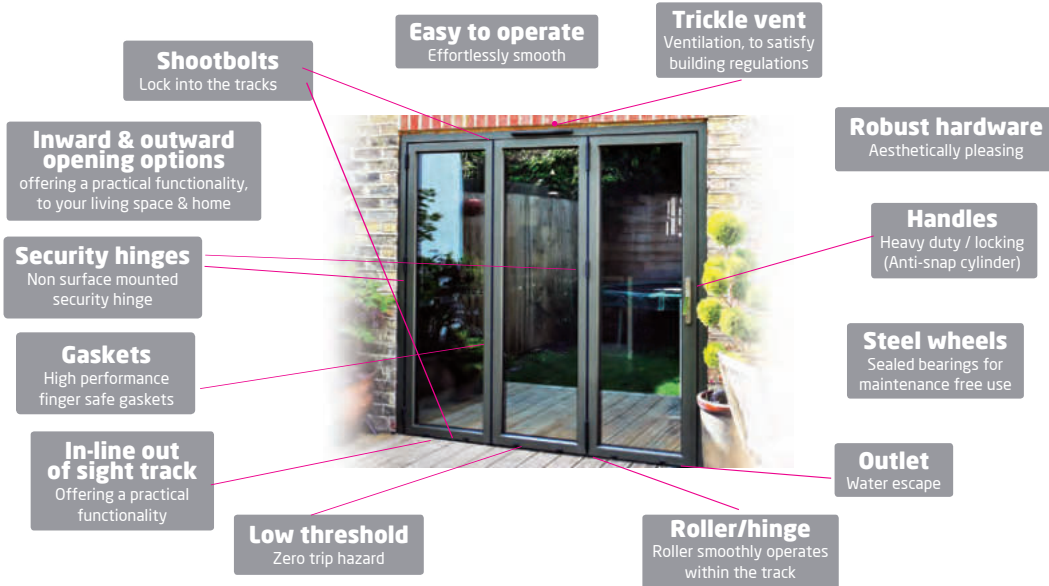
Gone are the days of French doors with a glass panel on either side
 Gone are the days of the sliding door which, when you think about it, is just a door with a large window at the side
 Why block half your available opening?

Why not take full advantage of the outdoor space you have, open your horizons and bring the outside in.

EXTENSIONS WINDOWS CONSERVATORIES BALCONIES DINING AREAS SWIMMING POOLS ROOM DIVIDERS CORNERS 3
 COMMERCIAL USE STORE & RESTAURANTS SUMMER ROOMS GARAGE CONVERSIONS ANNEXES GARDEN PATIOS

Functionality and Security

Our doors are easy to use and practical for every day use.



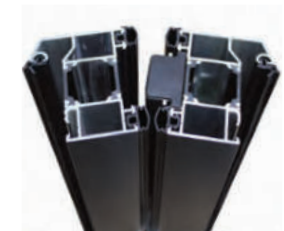
Top and bottom shoot bolts, locate directly into both top & bottom tracks



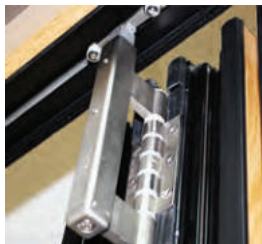
5 point multi-locking with 'Secure by Design', anti-snap, anti-bump, anti-pick, anti-drill, anti tamper cylinders



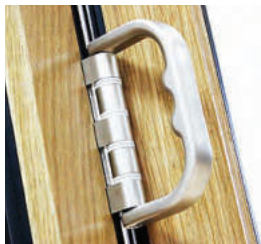
High security hinges to prevent the pins from being removed and the hinge being forced from the door



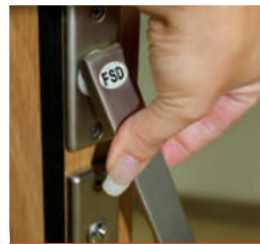
Tongue and groove (interlocking panels) designed to prevent panels from being forced open



Top & Bottom rollers for even weight distribution and smooth operation



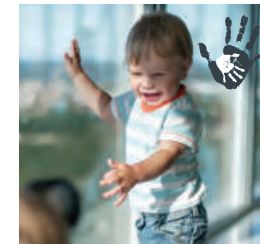
Pull handle(s), to enable ease of operation and easy closing



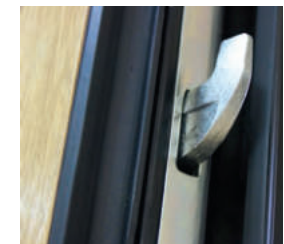
Slim flat handles for reducing stacking for when the doors are in use



Encapsulated running gear within the tracks and hidden hinge fixings, preventing it from being attacked



Child friendly fitted with finger safe gaskets



Hardened steel hook locks & dead bolts

SECURITY.... IS ONE OF OUR MAIN CONCERNS ON DOOR DESIGN, THAT IS WHY THE SECURITY AND INTEGRITY OF OUR DOORS HAVE BEEN TESTED TO DESTRUCTION IN **UKAS APPROVED TESTING LABORATORIES**

thermal efficiency



All of our systems have been **thermally simulated** to indicate the **true thermal value**, helping you choose the right option for your property and helping you save money on your fuel bills

TIMBER, U Value (W/m²k) of complete unit: 1.09 - 1.59

Timber is the most thermally efficient material used in the glazing industry

ALUMINIUM, U Value (W/m²k) of complete unit: 1.42 - 1.8

All aluminium profiles in our systems include a **thermal break** for greater thermal efficiency

ALUMINIUM/TIMBER, U Value (W/m²k) of complete unit: 1.52 - 1.8

Solid timber with **thermally broken** aluminium profiles for combined thermal efficiency

GLASS, U Value (W/m²k) of complete unit: 1.37 - 1.79

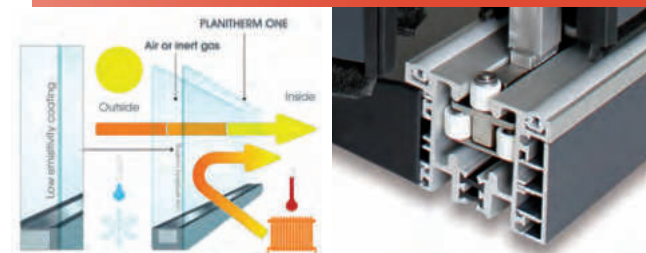
Triple glazed as standard for greater thermal efficiency

PVCu, U Value (W/m²k) of complete unit: 1.24 - 1.77

We use an steel reinforced PVCu profile

All of our systems are **double glazed with Low-E glass as standard**, we have tested for water ingress and air permeability. Increased thermal efficiency can be achieved by upgrading your glass choice (emissivity options of 1%, 3%, 5% and 10%) or to triple glazed units with Krypton gas, please ask for further details

- Weather tested to over 300 pascals
- Thermally Broken aluminium as standard
- Tested for water ingress and air permeability
- High performance rubber seals and brush seals
- Double or triple glazed with Low-E glass



A low U-value is useful during cold days when heating is needed. It is also helpful during hot days when it is important to keep the heat out.

Thermally broken aluminium, and aluminium tracks reduce thermal loss through transfer.

U-Values

The thermal rating of a window or door is measured in U-Values, the lower the U Value the better the rating.



Many companies will give you a U-Value based on the centre pane value or the U-Value of the glass (better than 'A' rated). This value will always be lower than the actual value of the complete window or door.

All our U-Value calculations are based on the whole door which is frame plus glass.

hardwood timber

*For a traditional or natural look
you cannot beat the feel and
warmth that timber brings!*

*Timber - Ideal
for all locations,
used extensively
near coastal
regions.*

All our engineered hardwood systems are expertly crafted by our fully trained staff, and all our profiles are laminated to give extra strength and to reduce expansion and warping.

Lamination is the technique of manufacturing a material in multiple layers, so that the composite material achieves improved strength, stability and sound insulation. Our lamination is assembled by heat, pressure and adhesive.



Manufactured using laminated hardwood timbers (Oak or Eucalyptus).



Anti-rot and anti-fungal treated with a low maintenance spray finish.



Bespoke glazing options can easily be incorporated to your order.

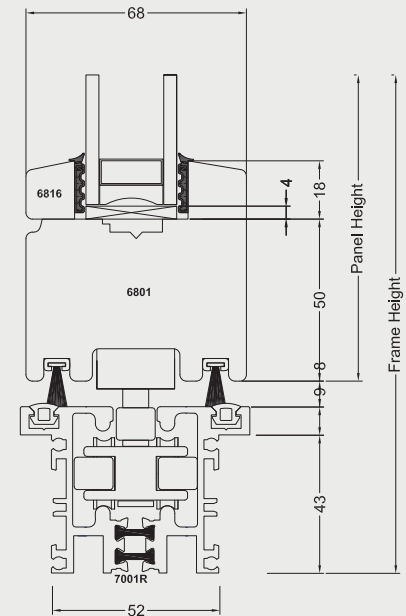
- Laminated profiles to reduce expansion and warping
- Anti-rot & anti-fungal treated frames
- Factory sprayed with long life, low maintenance finishes
- Environmentally sourced timber from sustainable forests



Specification - Wood (Timber FD68)

Frame width:	68mm
Frame thickness:	68mm
Maximum opening width:	1500mm
Maximum opening height:	3000mm
Panel height range (min/max):	750mm - 2884mm
Panel width range (min/max):	440mm - 1000mm
Material:	European Oak / Red Wood
Standard colour:	Unfinished natural timber
Optional colours:	Any RAL colour or natural stain
U Value (W/m ² k) complete unit:	1.09 - 1.59
Guarantee (Manufacturers):	10 years
Anti-fungal treated:	✓
Anti-rot treated:	✓
Laminated timber (reduces expansion / warping):	✓
Glass units, standard (optional):	24mm double glazed (triple glazed, low-E, tempered, laminated)

Profile drawing - Timber (FD68)



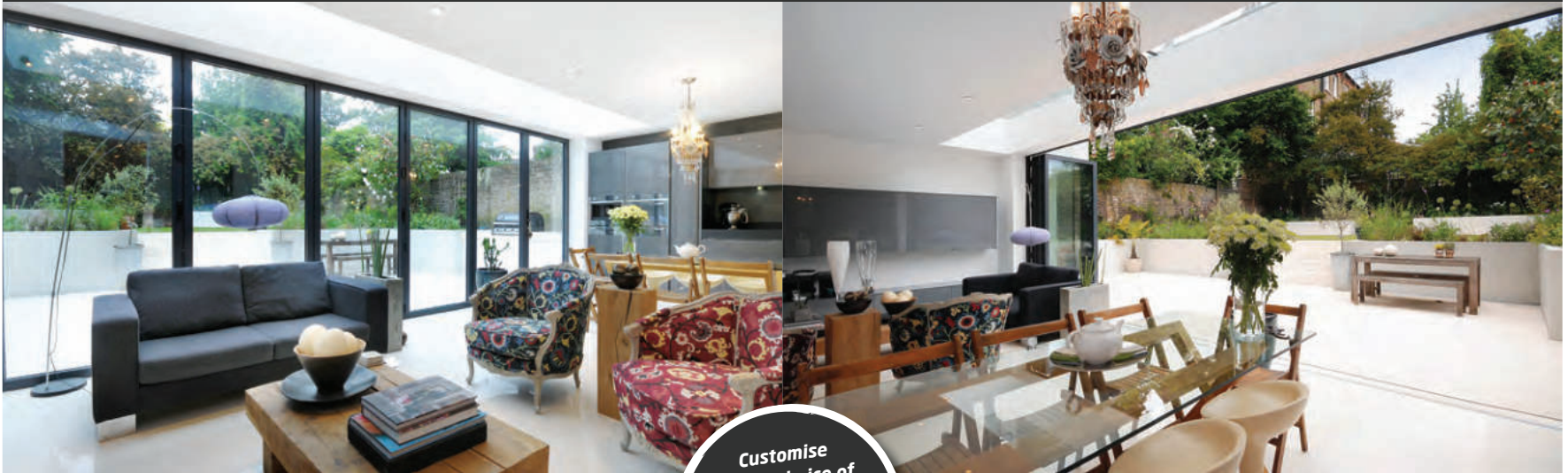
The timber frames are dipped into an anti-rot, and anti-fungal treatment to protect the frames from both the harsh rays of the sun and water ingress.

They are then finished to your specification using either a natural stain or a RAL colour of your choice, or if preferred we can provide the doors unfinished so you can paint or stain to your desired finish.

You can choose to enhance the natural look timber provides or choose any RAL colour finish to marry with existing architecture (see pages 28-29 for further details).

70mm aluminium

The 70mm aluminium system offers a modern look coupled with strength and durability



Customise
with a choice of
hardware, RAL
colour, special
finish & glazing
options

“ *Minimum maintenance required to keep it looking great, making the 70mm aluminium bi-fold door our most popular system* ”



Thermally broken aluminium frame, meaning no transfer of temperature



Heavy duty cleats for strength and durability



Copyright of Matt Sweeting

**THERMALLY
BROKEN**



**MODERN
STRONG
AND
EXTREMELY
DURABLE**



Copyright of Matt Sweeting



**Aluminium -
Ideal for larger
openings and
commercial
properties.**

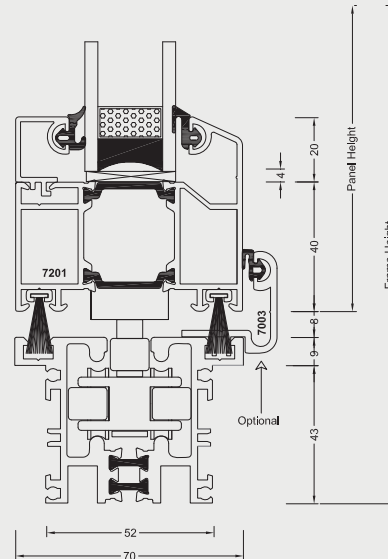
- Thermally broken for greater thermal efficiency
- Heavy-duty cleats for strength and durability
- Hard wearing material & finish
- Resistant to scratching and denting (1.75mm wall)
 - Contemporary appearance
 - Any RAL or Dual colour option
 - No condensation
- Ideal for larger openings and commercial properties



Specification - 70mm Aluminium (FD72)

Frame width:	60mm
Frame thickness:	70mm
Maximum opening width:	15000mm
Maximum opening height:	4000mm
Panel height range (min/max):	800mm - 3884mm
Panel width range (min/max):	440mm - 1100mm
Material:	Aluminium
Standard colour:	White (RAL 9016)
Optional colours:	Any RAL colour / dual colour
U Value (W/m2k) complete unit:	1.42 - 1.83
Guarantee (Manufacturers):	10 years
Aluminium thickness:	1.75mm
Glass units, standard (optional):	28mm double glazed (triple glazed, low-E, tempered, laminated)

Profile drawing - 70mm Aluminium (FD72)



aluminium & **timber**



Ideal for all locations, used extensively near coastal regions and areas highly exposed to the sunlight.

By bringing both our timber and aluminium systems together, we have created the Ali-Clad folding sliding door, an aluminium system clad internally with hardwood solid timber.



Aluminium to the outside, hardwood timber to the inside



Anti-rot, anti-fungal treated and spray finished (or natural) internal timber.

**70mm
THERMALLY
BROKEN
ALUMINIUM
AND
TIMBER**

It offers a strong, durable and maintenance free finish outside while still providing the warmth and character that timber brings inside.

**THE
BEST
OF
BOTH
WORLDS**

- Thermally broken poly-powder coated aluminium frame
- Thermally efficient (thermally broken track and frame)
- Timber can be easily changed or removed for painting
- Choice of Oak or Eucalyptus solid hardwood timber

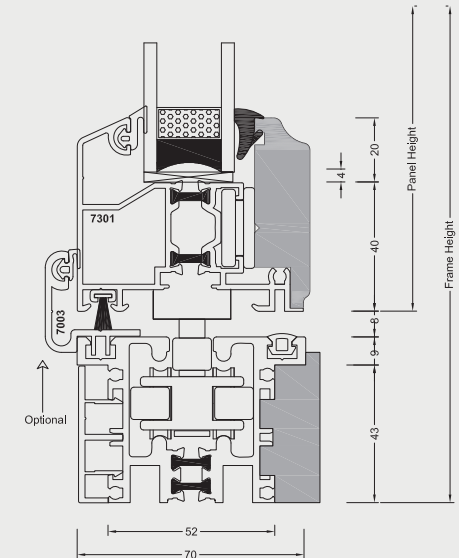


- Discreetly locked on timber profiles
- Thicker than standard aluminium walls for greater strength
- Water trap and outlet to prevent water ingress
- No nailed on glazing beads
- Dual colour, RAL coated frame & spray finished (or untreated) timber
- Timber anti-rot and anti-fungal treated

Specification - 70mm Aluminium / Timber (FD73)

Frame width:	60mm
Frame thickness:	70mm
Maximum opening width:	15000mm
Maximum opening height:	4000mm
Panel height range (min/max):	800mm - 3884mm
Panel width range (min/max):	450mm - 1100mm
Material:	Aluminium / Hardwood timber
Standard colour:	White (RAL 9016) / unfinished timber
Optional colours:	Any RAL colour or natural stain
U Value (W/m ² k) complete unit:	1.52 - 1.81
Guarantee (Manufacturers):	10 years
Aluminium thickness:	1.75mm
Anti-fungal & anti-rot treated:	✓
Solid timber cladding:	✓
Glass units, standard (optional):	28mm double glazed (triple glazed, low-E, tempered, laminated)

Profile drawing - Aluminium / Timber (FD73)



70mm PVCu

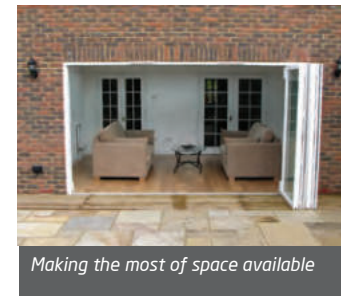


... matching your existing PVCu windows with our PVCu bi-fold door is easy!

This 70mm system is constructed from a steel reinforced PVCu profile, with attributes for high in strength and having fantastic thermal values.



PVCu bi-fold doors externally opening, stacking to the left (internal view)



Making the most of space available

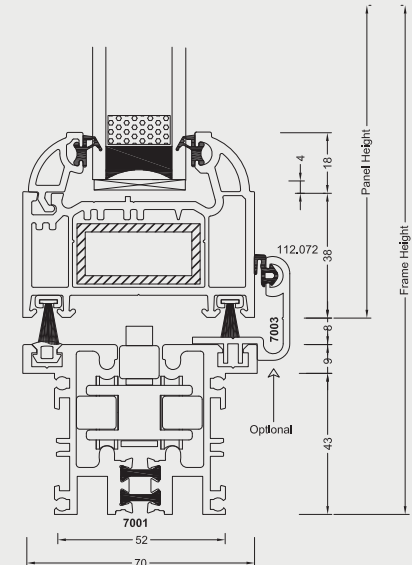


- CE & CPD compliant
- Manufactured to the highest standards
- BS6375 weather performance
- Cost effective solution
- High thermal efficiency
- Reinforced profile
- Narrow sight lines
- No face fixed hardware
- Flush track
- Fully inline system
- Durable

Specification - PVCu (FD71)

Frame width:	70mm
Frame thickness:	70mm
Maximum opening width:	8000mm
Maximum opening height:	2400mm
Panel height range (min/max):	800mm - 2284mm
Panel width range (min/max):	400mm - 800mm
Material:	PVCu
Standard colour:	White PVCu profile
Optional colours (laminated): Grey / Black / Woodgrain	
Ask for other RAL colours	
U Value (W/m ² k) complete unit:	1.24 - 1.77
Guarantee (Manufacturers):	10 years
Profile Thickness:	2mm
Glass units, standard (optional):	28mm double glazed (triple glazed, low-E, tempered, laminated)

Profile drawing - PVCu (FD71)



glass/aluminium

FLUSH GLAZED,
frameless glass bi-fold
with **aluminium** (FD75)*
**reversible design*

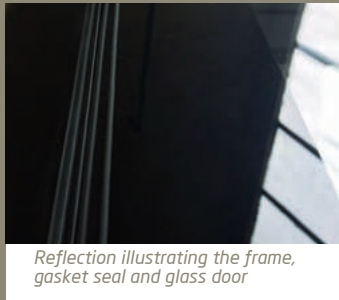
RAL colour **flush glazing and frame**

The ONLY UK designed and manufactured
all glass wall folding sliding door available.
Thermally efficient, triple glazed, argon gas filled,
unique architectural designed bi-fold door incorporates
open in or open out, stacking left or stacking right,
glazed in or glazed out configurations, with maximum
security and integrity with no compromises

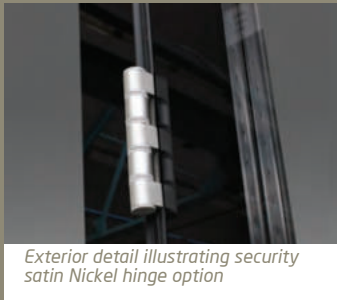


Silk-screen printed glazing and powder coated aluminium, all to your specification

- Engineered from 3 layers of high impact insulated glass
- Reversible design, flush glazing internal or external
- Choice of screen printed coloured glass & coated frames
- Maximum security and integrity with no compromises
- Suitable for residential & commercial applications



Reflection illustrating the frame, gasket seal and glass door



Exterior detail illustrating security satin Nickel hinge option

The FD75 glass wall offers an ultra modern contemporary appearance

Powder coated thermally broken aluminium frames for structural stability and strength blended with a unique designed glass retaining system ensuring that no glazing beads are required and that the structural integrity of the glass panels remain intact in all opening situations. The design of the system also ensures the glazing chambers are fully ventilated thus ensuring longevity of the triple glazed units.



FD46 is an ultra slim all glass triple flush glazed folding sliding door



FD76, Glass flush glazed, frameless glass bi-fold with hardwood timber*

FD46

An ultra slim all glass triple flush glazed folding sliding door. Open in, open out options.

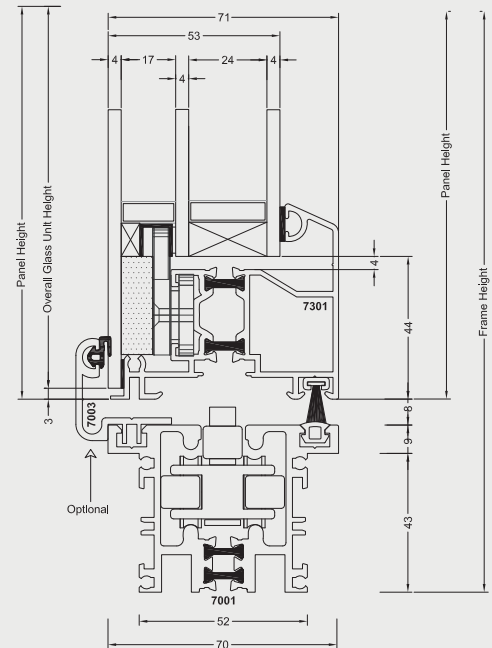
FD76

A combination of classic meets new. Open in, open out and *reversible, double glazed and triple glazed options will be available to achieve fantastic U-values!

Specification - Glass (Glass/Aluminium FD75)

Frame width:	60mm
Frame thickness:	70mm
Maximum opening width:	15000mm
Maximum opening height:	3000mm
Panel height range (min/max):	750mm - 2884mm
Panel width range (min/max):	440mm - 1000mm
Material Door panels:	Glass outer* / Aluminium inner* reversible
Material Outer Frame:	Aluminium
Standard colour:	Glass / RAL
Optional colours:	Glass tint or clear / RAL colour
U Value (W/m2k) of complete unit:	1.37 - 1.79
Guarantee (manufacturers):	10 years
Aluminium Thickness:	1.75mm
Glass units, standard (optional):	52mm triple glazed (tempered, laminated)

Profile drawing - Glass/Aluminium (FD75)



Finishes and Coatings



Finished in anodised Bronze with metallic RAL beading with satin nickel hardware.

Aluminium & Aluminium-Timber clad

Powder coating

All of our aluminium products are powder coated which *exceeds the industry standard*. There are hundreds of RAL colours you can choose from.

Our powder coatings have a *life expectancy of up to 25 years* and are *maintenance free*.

Anodised / special finishes

Please enquire direct for any special requests



Timber

Translucent coatings and bespoke colours

All of our timber products are factory sprayed as standard with the *highest quality coatings on the market*. Choose a natural stain to enhance your choice of woodgrain or choose any RAL paint reference to match an existing building project or existing windows and doors, or if you prefer left natural, the choice is yours.

Our Factory spray coatings are applied to the timber in *three coats at 250 microns per coat*, this is comparable with up to 15 coats of brush-applied paint.

Our factory spray coatings last *up to 10 years before requiring first maintenance*.



Choose a woodgrain stain to match architectural surroundings.

Commercial & Corporate

All our doors are hard wearing and are perfect for both domestic and commercial use. Make a statement with your choice of colour or finish or simply choose to be easily recognised and match your corporate colours.

These examples have been reproduced in print to give a representation of colour and finish, as realistic as possible. Further information can be found at <http://www.tekno.co.uk>. Please note that because wood is a natural material, surface texture and shade may vary slightly.

OAK - Teknos colour options



EUCALYPTUS - Teknos colour options



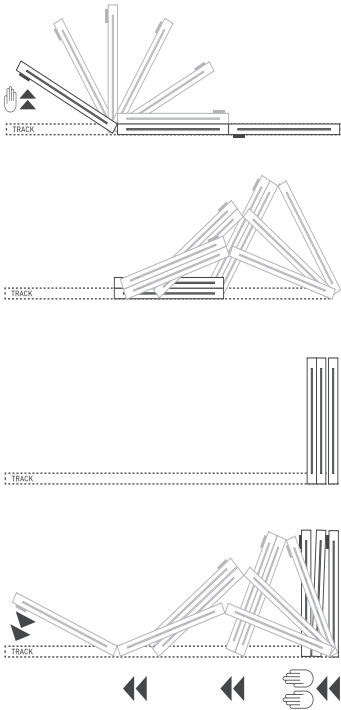
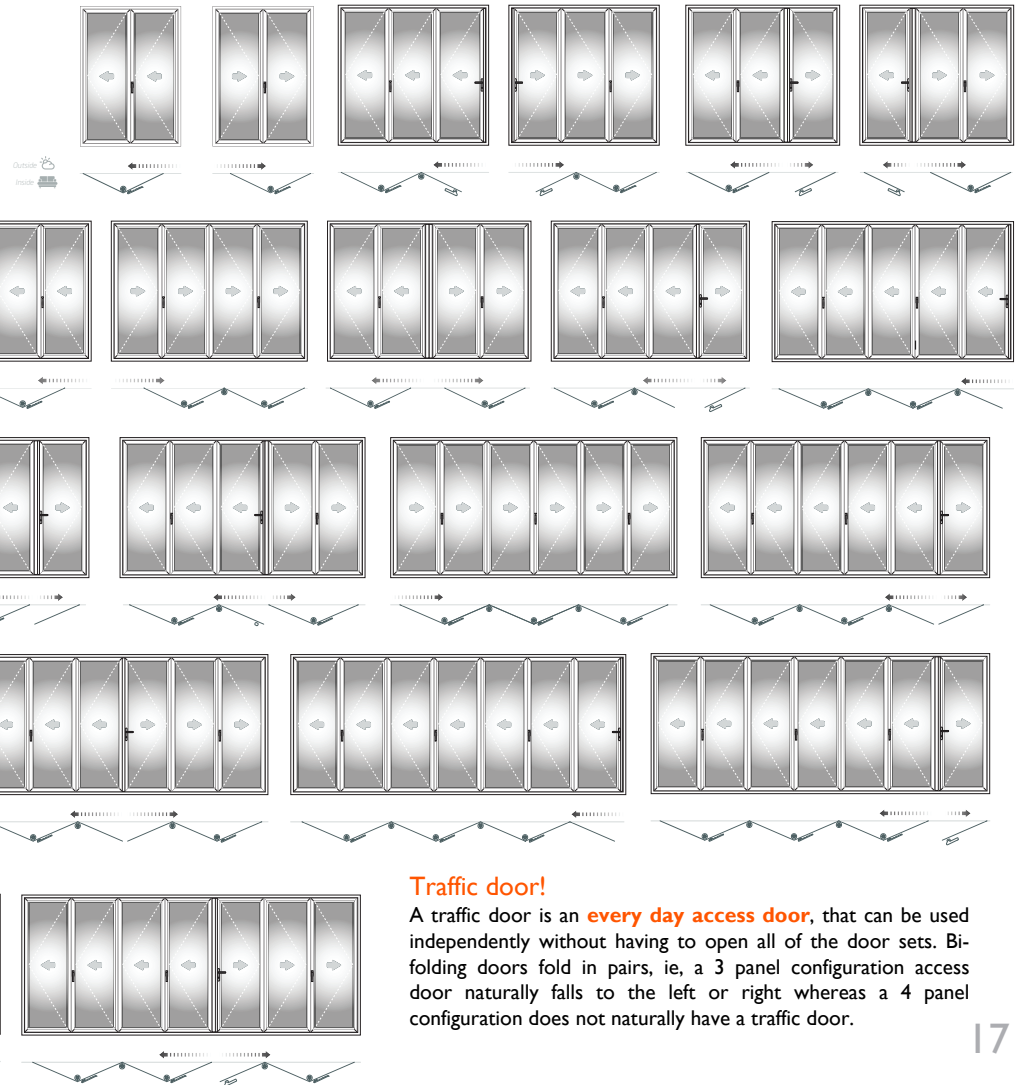
Configurations

STACKING
How will your doors stack when in use? Where will you have most room?

A bi-fold door can accommodate all tastes, applications and building requirements. There are over 100 opening styles, including: inward opening, outward opening, stacking to the left, stacking to the right and stacking both ways. Opening configurations ranging from 2 panels one way to 8 panels both ways.

Remember, this is only a selection of what is available, for options not illustrated / inclusion of static panels etc please contact us with your requirements directly.

Our Bi-fold doors are always viewed from the OUTSIDE, so when ordering always give the opening direction of your door as you look at it from the outside



Traffic door!

A traffic door is an **every day access door**, that can be used independently without having to open all of the door sets. Bi-folding doors fold in pairs, ie, a 3 panel configuration access door naturally falls to the left or right whereas a 4 panel configuration does not naturally have a traffic door.

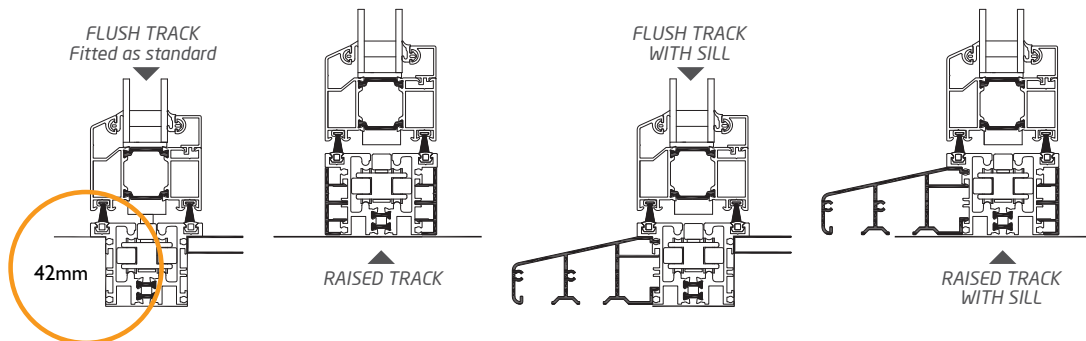
Bottom track options



We manufacture an inline out of sight track system, this track system is strong and secure, and all running gear is concealed (which ever option you choose) and is resistant to attack from potential intruders, we offer both inward and outward opening options. Our flush track option is also water resistant, many other systems do not offer these options.

There are threshold details to suit all applications, some people prefer a step on the inside and outside, some prefer a step on the outside only. But for the many, they prefer flush threshold that blends the inside floor with the outside floor, especially those with children, elderly or someone in a wheel chair.

To achieve a finished flush floor system it is necessary to ascertain the size from the top of the finished floor to the underside of the lintel. The track will then sit 42mm lower than your finished floor.



TRACK STYLES

◀ FLUSH TRACK (AS STANDARD)

This options gives you a **flush floor level** from the inside of the property to the outside of the property.

- No trip hazard (only 8mm bevelled upstand)
- Water resistant (If area is prone to water pooling many people sink an external drain to flow water away from the doors)
- Strong, a car can run over it to gain access to a garage
- Ideal for internal use with no trip hazard
- Colour options; anodised silver, bronze or black

RAISED TRACK

This options does not give you a flush floor level from the inside of the property to the outside of the property. The track itself is the same as the flush option, only it is not sank under the floor level on installation.

FLUSH TRACK WITH SILL

This option offers a step down out of your property with no trip hazard, and with a sill to drain way from the doors.

- Sill projection 90mm

RAISED TRACK WITH SILL

This option offers a step down out of your property, with a sill to drain way from the doors.

- Sill projection 90mm

Choice of Hardware



Lever/lever handle (internal shot) finished in satin Nickel



Lever/flat handle option for reduced stacking space



Pull handle, to assist the locking into position of the bi-fold door

Lever Handle

Fitted to the main access door, an aesthetically pleasing and durable locking door handle ergonomically designed and engineered. You can choose a lever/lever handle or lever/flat handle option, the latter reduces the stacking widths of the doors. Each handle set comes complete with 3x keys.

Flat Handle

The primary use is to operate the shootbolt mechanism, a simple twist of the handle locates the shootbolts into position within the top & bottom track securing the door into position. All door systems are supplied with flat handles.

- Additional flat handles can be purchased to be externally fitted

Pull Handle

All outward opening door systems are supplied with the correct number of pull handles fitted to your door. Located internally to assist the locking into position of the bi-fold door when operating the flat handle.

Colour options for handles (lever/flat/pull):

Available in Black, White, Gold, Chrome or Satin Nickel as standard, Stainless steel (recommended for coastal regions) as an upgrade.

Butt Hinges

All our door sets are fitted with these extremely strong and durable hinges (Black, White or Satin Nickel as standard).

The security hinges are fitted within the frames interlocking tongue and groove profile, making it impossible for intruders to attack the hinge.

- Heavy duty security folding door butt hinges
- Security is provided via the secret grub screw (non visible)
- Stainless Steel option recommended for coastal regions

We are constantly improving our products therefore reserve the right to update our hardware range.



Flat handles, illustrating the hardware colour options available



Stainless steel butt hinge, recommended for coastal regions



Telephone 0161 486 6049
Fax 0161 486 0912
Email sales@easyfitwindow.com
www.easyfitwindow.com



All information in this book is provided for guidance only and is given in good faith, but without warranty or guarantee of any kind, whether implied or expressed. Our policy is to continually improve products, therefore methods, materials and changes of specification may be made from time to time without prior notice. Colour samples printed in this publication should only be used as a guide and are as accurate as our printing process allows.